

PROJECT SPOTLIGHT CATALOG



CONTENTS

Steelscape's portfolio of project spotlights offers you the chance to see our finishes on real world projects.

Please browse the projects below for design and color inspiration. Please reach out to us if you have questions or request a free samples at [Steelscape.com](https://www.steelscape.com)

3 Vintage®

- 4 Charles Schwab Building
- 5 Hanger Home
- 6 Highland Middle School
- 7 Goodhaus
- 8 Orchard Mesa Middle School
- 9 Mother Neff State Park
- 10 Broadcast Apartments
- 11 Self Storage and Mixed Use
- 12 Washington High School STEM
- 13 Briarwood Elementary School
- 14 North Gresham Elementary

15 Vintage® Heritage

- 16 Commercial Building

17 Eternal Collection® (Special Order)

- 18 Kalama Reroof (Special Order)
- 19 Shelton Family YMCA (Special Order)

20 Woodgrain

- 21 Matte Barnwood Farmhouse

22 Aged Metallics

- 23 Oceanside High School Performing Arts Center

24 Rawhide

- 25 Coyote House

26 Textured Rustics

- 27 Rustic Rawhide Residential Home

28 Rustic

- 29 Shoreline Fire Station 63
- 30 Thunder Vista P-8 School
- 31 Firestone Vineyard
- 32 Central Pierce Fire Station 63
- 33 Sky Ranch Middle School
- 34 Spruce Elementary
- 35 Port of Kalama Interpretive Center

36 Solid Colors

- 37 Skokomish Community Center
- 38 McMenamins Kalama Harbor Lodge
- 39 410 Urban Landfill
- 40 Elk Grove Animal Shelter
- 41 "Black Magic" Private Residence

42 ZINCALUME®

- 43 Landmark Square

44 Natural Matte®

- 45 Sustainable Practices

Vintage®

A Dynamic Metal Roofing and Siding Color

Vintage® offers a warm, classic-aged metal appearance, designed to maximize the natural light cast on your metal roofing and siding.

Its semi-translucent color allows for the character of the underneath metal to be visible, providing unparalleled depth and a distinct metallic sheen. The dynamic nature of this finish plays on the changing light of its environment.

Vintage®

SRI 22 | 14102



PROJECT SPOTLIGHT:

Charles Schwab Building Renovation

Tucson, AZ



This Charles Schwab building in Tucson, Arizona, is a striking example of the transformative power of innovative design. This 1975 structure has been dramatically reshaped to pair functionality with a captivating aesthetic with the use of Steelscape's Vintage® coated metal.

The design team, Repp + McLain Design & Construction, realized their client's modern vision through their thoughtful selection of the Vintage color. Selecting 24ga Vintage enhanced the building's visual allure and bolstered its long-term durability. The semi-translucent color allows the metal's subtle character to shine through, providing depth and a unique metallic sheen. Steelscape's proprietary coating to achieve this color also equips the metal's surface with graffiti-resistant qualities.

In a creative twist, the standing seam roof panels, manufactured by AEP Span, were ingeniously installed as siding panels. This unconventional application showcases the design flexibility of metal. This revitalization pays tribute to the structure's history while celebrating the enduring elegant beauty of contemporary architecture.

Architect: repp + mclain design and construction
General Contractor: repp + mclain design and construction

Metal Siding Products: Standing Seam
Metal Colors: Vintage®



PROJECT SPOTLIGHT:

HANGAR HOME

ALPINE, WY

This home sits on the expansive Refuge Air Ranch, a unique 65 acre, 25 lot community with 6,000 Ft of runway. The home integrates an airplane hangar and a comfortable living quarters, and uses a diverse range of materials to integrate the structure into its mountain setting. Recreating the appeal of an old farmhouse, Steelscape's Vintage® is featured in a silo focal point of the design. The dynamic finish and warm color of Vintage provide an intriguing accent piece in this unique design. Vintage is further used as a contrasting trim and hangar door color.

Architect: Timberline Associates

For samples or more information on Steelscape's Vintage® visit [Steelscape.com/vintage](https://steelscape.com/vintage)





PROJECT SPOTLIGHT:

HIGHLAND MIDDLE SCHOOL

MEAD, WA

This 120,000 square foot, 850 student school sits within the Five Mile Prairie region of Spokane Washington. The design features smaller learning communities for each grade to improve safety, to enhance a sense of community, and to ease student progression from elementary to middle school.

The exterior façade features Steelscape's Vintage finish in conjunction with AEP Span's Flex Series® metal siding. The combination of the engaging, varied vertical panel shapes, and dynamic color of Vintage, produce siding accents and shadows that evolve throughout the day. The modern yet restrained hue of Vintage integrate with the light brick perimeter and the open, natural setting of the school. Metal siding was a conscious project decision to maximize the life span of the building while reducing operational costs. Vintage's inherent graffiti resistance aided in the color selection decision, making its use for a school a great fit!

Architect: ALSC Architects

Installer: Graham Construction

Photo Credit: Alan Brandt Photography

For samples or more information on Steelscape's Vintage® visit [Steelscape.com/vintage](https://steelscape.com/vintage)



PROJECT SPOTLIGHT:

GOODHAUS

NEVADA CITY, CA

Completed in 2018, Goodhaus is a Zero Net Energy home designed by and built for the principals of Atmosphere Design Build. Selected as Fine Homebuilding's House 2018, this 2,300 sq ft family home embodies the designer's passions of resiliency, efficiency, health and comfort, beauty and playfulness.

Steelscape's Vintage® was used to achieve the design vision of 'handmade modern' and to complement the extensive use of natural cedar siding. Vintages dynamic hue contributes to the integration of the structure with the dense, natural environment of the surrounding Sierra foothills.

Architect: Atmosphere Design Build

Photo Credit: Kat Alves Photography

For more information on this color, visit steelscape.com/vintage





PROJECT SPOTLIGHT:
ORCHARD MESA
MIDDLE SCHOOL (OMMS)
 GRAND JUNCTION, CO

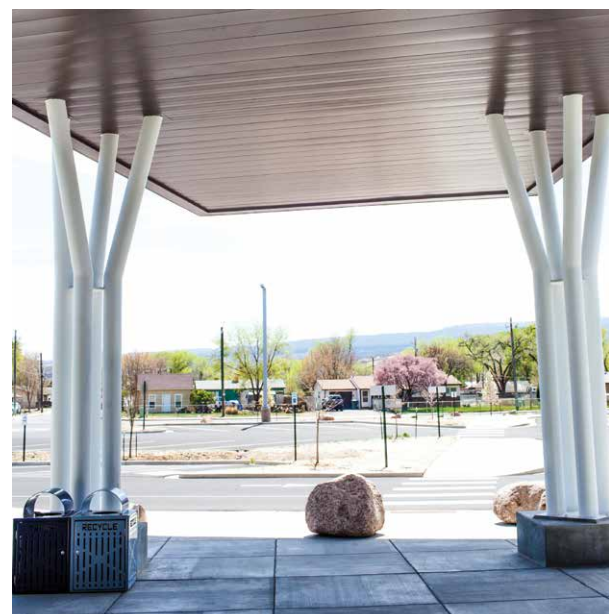
This project had a simple design mission to create an ‘awe-inspiring’ area where both students and staff were excited to visit each day. At almost 100,000 square feet in size, this modern, visually striking school has achieved this vision.

Steelscape’s dynamic Vintage® finish was selected as the preferred material for the metal façade as its unique interaction with light contributed to the layered design of the structure. The combination of the upper varied wall panel design, in conjunction with a lower multi-tone brick façade, contributes to an engaging sense of texture.

Vintage’s versatile hue enables the expansive building to integrate into its high-desert environment, and metal’s outstanding durability provides peace of mind for the school district for decades to come.

Architect: Blythe Group + Co.

For samples or more information on Steelscape’s Vintage® visit [Steelscape.com/vintage](https://steelscape.com/vintage)





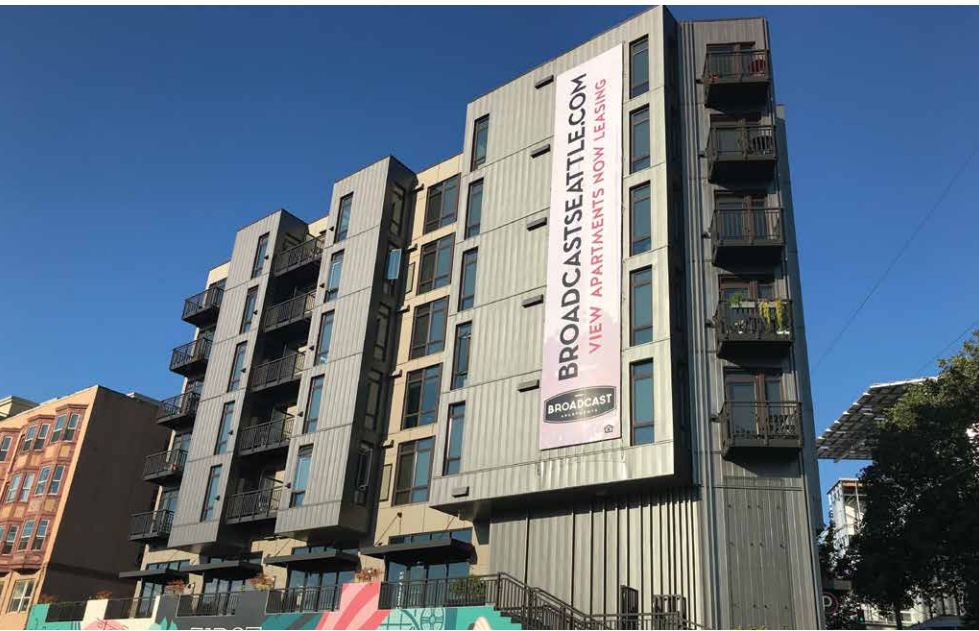
PROJECT SPOTLIGHT:
MOTHER NEFF STATE PARK
 MOODY, TX

This new, limestone visitor center formed the centerpiece of the re-opening of Mother Neff State park following extensive upgrades in 2015. The design team chose the classic color and depth of Steelscape’s Vintage® to complement the mixed metal and stone facade. Designed to match existing historic structures within Texas’ oldest state park, Vintage’s ageless hue integrates the clean lines of modern roofing design with the unique texture of authentic stone.

Roofer: Port Enterprises and Roofcrafters

For more information on Steelscape’s Vintage® visit [Steelscape.com/vintage](http://steelscape.com/vintage)





PROJECT SPOTLIGHT:

BROADCAST APARTMENTS

SEATTLE, WA

The Broadcast Apartment complex stands out from its surroundings through the extensive use of Steelscape’s Vintage metal finish. Featuring 70 residential units and 4 live-work units, the complex features a variety of different wall panel forms to add texture and character to the flat surfaces of the structure. The timeless warmth of Vintage® provides a distinctive, evolving appearance that engages with natural light in a compelling way. Finished in 2017, the structure features a collection of different spaces incorporating apartments, retail space, rooftop entertainment options, and underground parking.

Architect: Johnson Oaklief Architecture and Planning

Builder: Trent Development

For more information on Steelscape’s Vintage® visit [Steelscape.com/vintage](https://steelscape.com/vintage)





PROJECT SPOTLIGHT:

Self-Storage and Mixed Use

SACRAMENTO, CA

At the intersection of two freeways sits this distinctive mixed-use development. Designed to capture the attention of passing motorists, the structure includes a state-of-the-art self-storage facility, residential lofts, and street-facing retail stores. The design features a broad material palette of brick, concrete, and metal siding and contributes to the continued revitalization of the west-end Broadway area.

The design features Steelscape’s Vintage® finish, used in conjunction with AEP Span’s NuWave® Corrugated profile. This color subtly contrasts the different layered materials used in the structure while still promoting the historical roots of this area. The texture of the corrugated profile enhances visual appeal, despite the design’s functional need to be boxy and utilitarian.

Architect: Vrilakas | Groen

Siding Product: AEP Span 24-gauge Nu Wave® Corrugated

Installer: Rua and Son Mechanical

Finish: Steelscape’s Vintage®

For more information on Steelscape’s Design and Color Solutions, visit steelscape.com





Photo credit: Amos Shriver, Shutter Release Photography

PROJECT SPOTLIGHT:

WASHINGTON HIGH SCHOOL STEM

TACOMA, WA

This STEM academy delivers an inspiring environment for hands on learning in science and technology. Consisting of the renovation of two existing buildings and the addition of a new structure, the facility provides the benchmark for the school district's labs and classrooms.

Steelscape's Vintage® was used in conjunction with a box-ribbed metal wall panel to add texture and complementary shadow lines to this modern structure. Vintage's classic metallic hue interacts dynamically with natural light and blends exceptionally well with the mixed use of wood and masonry siding products.

Architect: Erickson McGovern

Builder: Architectural Sheet Metal

For more information on this color, visit steelscape.com/vintage





PROJECT SPOTLIGHT:

BRIARWOOD ELEMENTARY SCHOOL

RENTON, WA

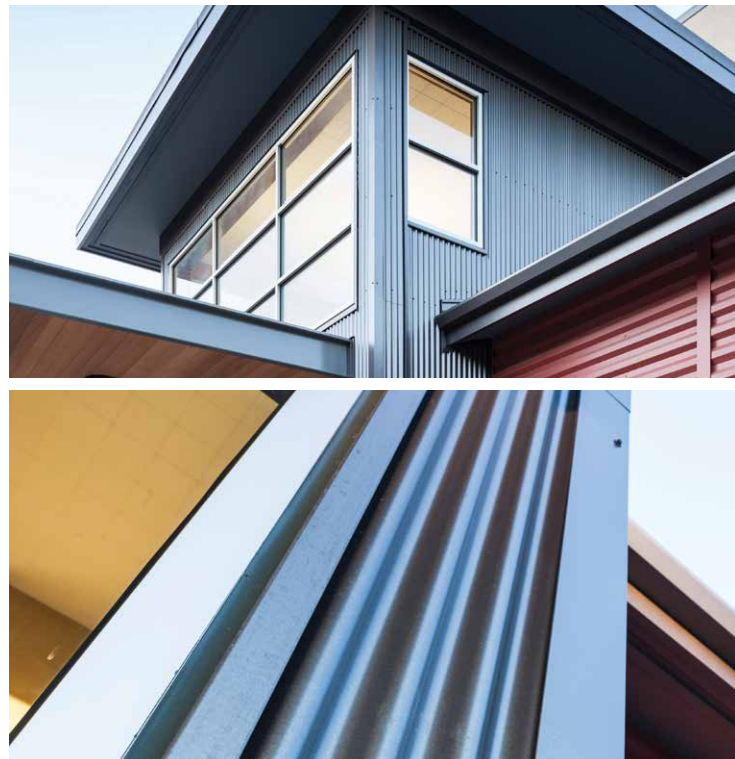
This 2-story, 28-classroom school replaces the original 1963 building to bring elementary school education into the 21st century. The design emphasizes natural lighting and ventilation to improve the learning environment while reducing energy consumption.

The building extensively features metal siding and roofing, a desirable choice when durability and low operating costs are important considerations. The roofing and siding surfaces feature Steelscape's versatile yet dynamic Vintage® color, which accentuates the shapes and shows of the building.

Architect: Cornerstone Architectural Group

Contractor: Babbitt Neuman Construction Company

For samples or more information on these colors, visit steelscape.com





PROJECT SPOTLIGHT:

NORTH GRESHAM ELEMENTARY SCHOOL

GRESHAM, OR

This collaboratively developed school instills pride among teachers and students with its commanding yet memorable design. The design focuses on dynamic circulation, which creates student gathering spaces and provides students with a variety of pathways, both physically and academically.

The façade extensively features Steelscape’s Vintage® finish on a box ribbed panel. The classic aged appearance of Vintage works in concert with other siding panels to add texture, and to contrast the rich red brick siding elements. The Vintage finish further helps this design endure the test of time with its standard anti-graffiti finish.

Architect: BBT Architects

Installer: Skyline Sheet Metal

For samples or more information on Steelscape’s Vintage® visit [Steelscape.com/vintage](https://steelscape.com/vintage)



Vintage® Heritage

A Unique Metal Roofing & Siding Color

Vintage Heritage expands upon the timeless aesthetics of Steelscape's original Vintage® finish by adding additional depth and enhanced character.

Our Legacy and Evolution prints provide intensity to the changing light of your structure's environment, allowing for a dramatic, yet classic look.

Both are designed to enhance immediate surface engagement while providing a classic aged metal appearance from afar. Vintage Heritage is perfect for your next metal roofing or siding project.



Legacy

SRI 20 | VSPGLG45



Evolution

SRI 22 | VSPGEV45



PROJECT SPOTLIGHT:

COMMERCIAL BUILDING

BOZEMAN, MT

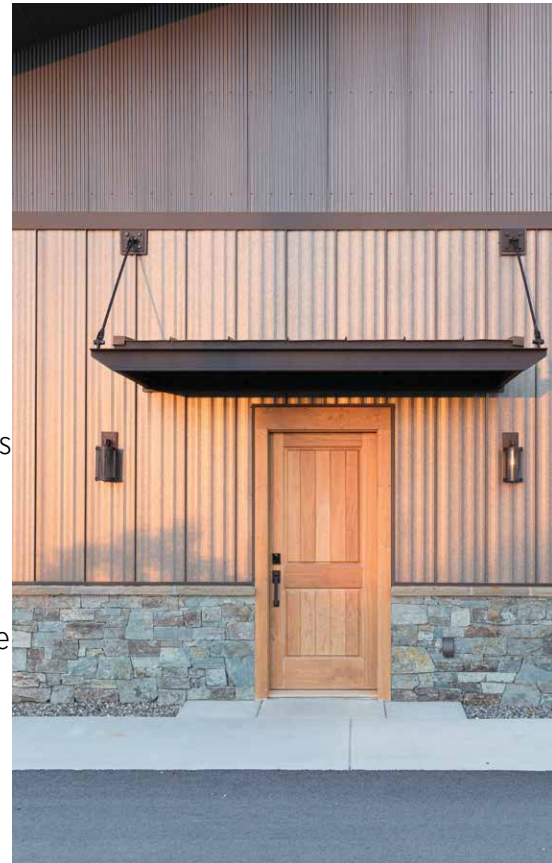
16” standing seam and ¼” corrugated metal siding with Steelscape’s Vintage® Heritage finish feature on this commercial building in Montana. This product combination provides a clean look and transforms the visual appeal of this utilitarian building design. Vintage Heritage offers unique visual appeal through its warm yet distinctive finish, versatile color, and dynamic light interaction.

The customer for this project had previously used Steelscape’s Vintage® in other exterior siding applications. They were excited by the enhanced visual distinction and added depth that Vintage Heritage offers and were eager to install one of the first applications of the product. The result looks fantastic, and the customer was thrilled with the transformational impact on the building.

Product: 16” Nailstrip (Standing Seam), and ¼” Corrugated

Finish: Vintage® Heritage Legacy

Product manufacturer and photo credit: Great Northern Metal Company



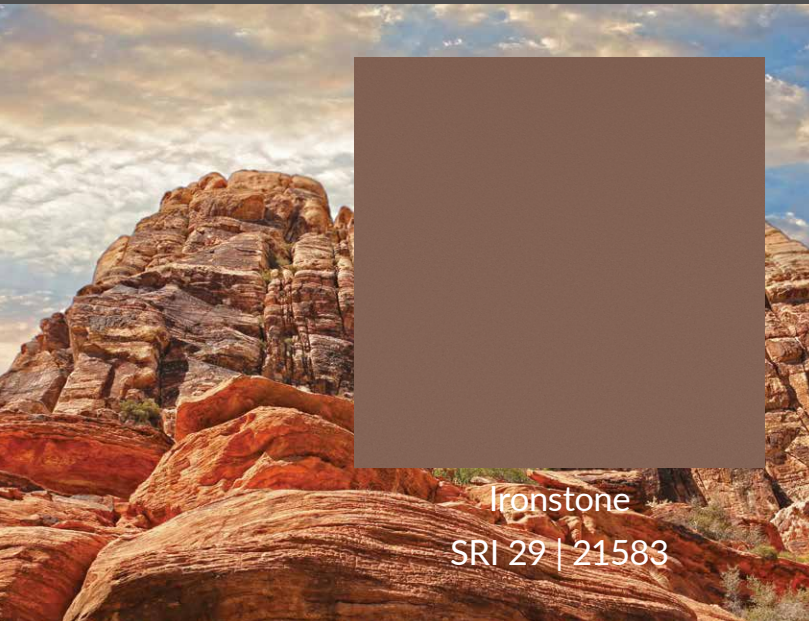
For more information on Steelscape’s Design and Color Solutions, visit steelscape.com

Eternal Collection®

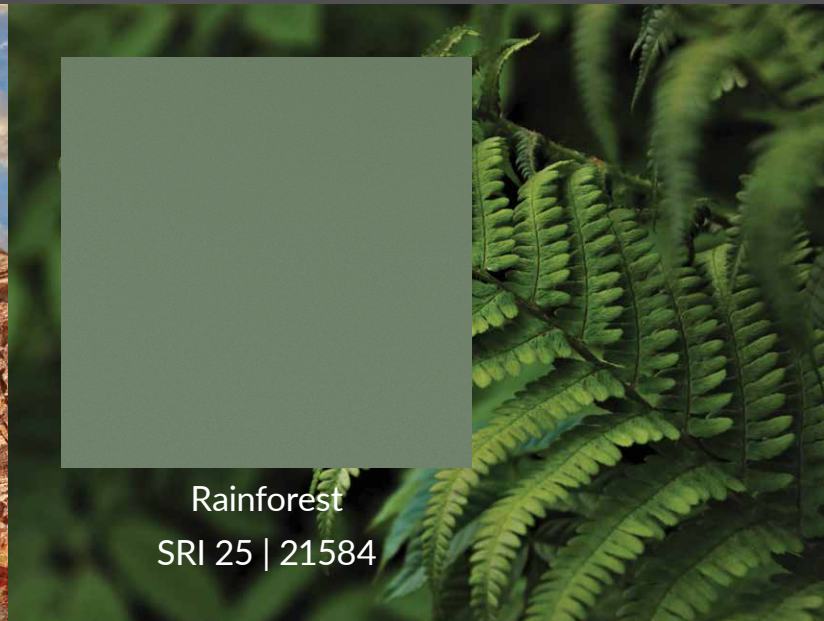
Stunning Metal Roofing and Siding Colors

The Eternal Collection encompasses four inspiring colors, all employing the latest in paint technology. Their translucent finishes provide a distinctive surface sheen, depth, and rich color.

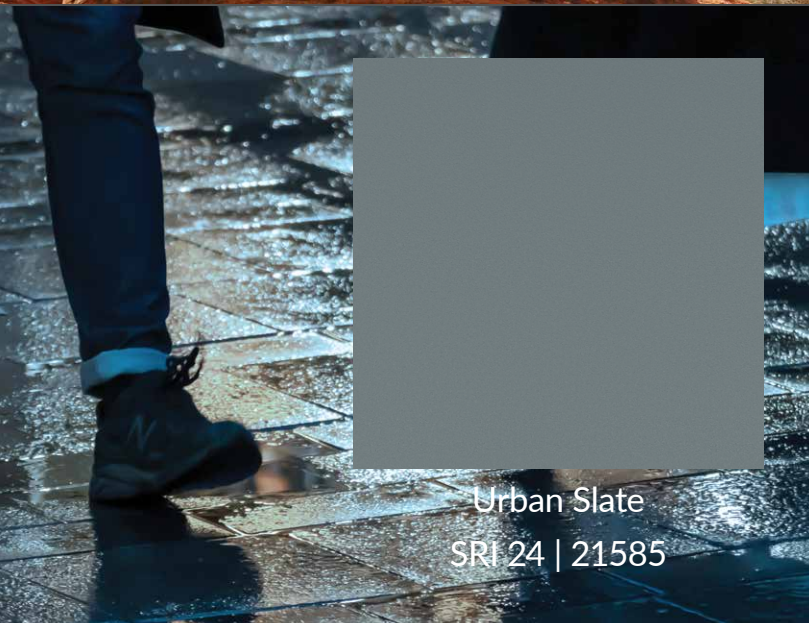
This collection blends exceptionally well with both urban and rural environments, as well as other building materials. Ideal for concealed fastener wall panels, insulated metal panels, standing seam roofing, and other metal accents.



Ironstone
SRI 29 | 21583



Rainforest
SRI 25 | 21584



Urban Slate
SRI 24 | 21585



Sungold
SRI 36 | 22072



PROJECT SPOTLIGHT:

KALAMA HOME REROOF

KALAMA, WA

A Washington State homeowner selected Steelscape’s Eternal Collection® Urban Slate to uplift the style of their home with a stunning new roof. Built in 1993, this home featured an original teal roof with outdated, inferior paint technology.

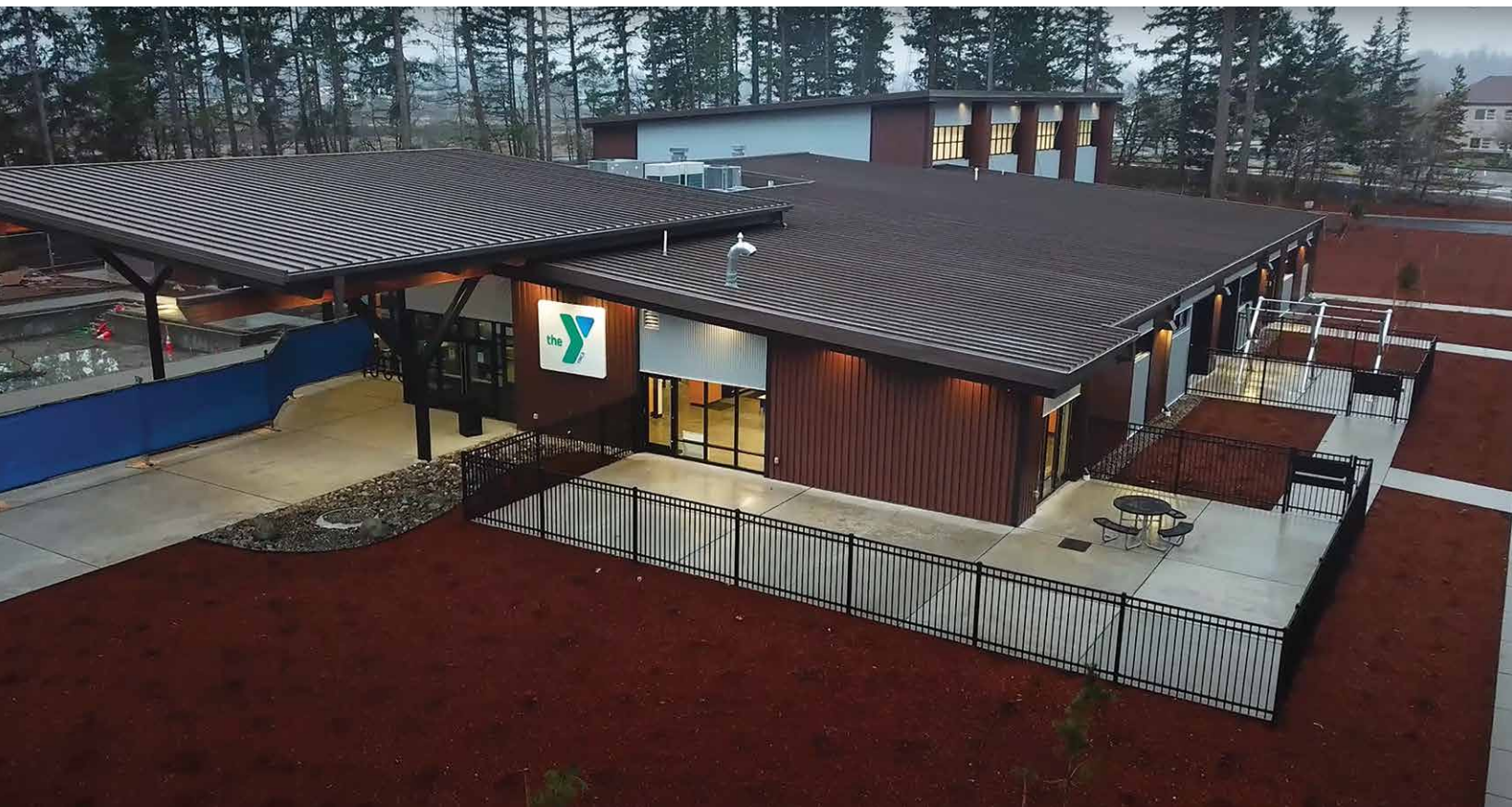
The striking new roof features Steelscape’s Urban Slate on a classic standing seam profile. Urban Slate is a semi translucent finish which provides a deeper color that changes dynamically with daylight. This engaging color in conjunction with the clean, crisp lines of the standing seam profile uplift the curb appeal of this home and improve the integration of the home with its lush environment.

Roofing Profile: AEP Span’s Design Span® *hp*

Installer: Cogent Construction, Shelton WA

Eternal Collection® is available by special order.





PROJECT SPOTLIGHT: SHELTON FAMILY YMCA

SHELTON, WA

Located in the South Basin of the Puget Sound resides this vibrant, state-of-the-art, healthy living facility. Run as a nonprofit organization, the YMCA is dedicated to strengthening the local community through youth development, healthy living, and social responsibility.

The spacious facility includes pools, gyms, sports courts, and educational areas and an engaging façade featuring Steelscape's Eternal Collection® Ironstone finish. With its unique depth and dynamic light interaction, Ironstone provides a warm, contemporary color that complements wood and concrete materials and contrasts other metal elements. Its robust FEVE coating is a building manager's dream, with outstanding durability, graffiti resistance, and low long-term maintenance requirements.

Architect: Williams Architecture

Installer: BahnMiller Construction, Inc

Eternal Collection® is available by special order.



Woodgrain

Metal Siding Authentic Wood Finish

Steelscape's Woodgrain prints offer the warmth and natural beauty of wood combined with the durability of metal. Compared to wood, metal is fire-resistant, rot-resistant, termite resistant, and easier to maintain.

Featuring a matte finish for optimum realism, Steelscape's Woodgrain is ideal for siding applications, including board and batten siding, wall accents, metal log cabins, and barndominiums.



Black Cedar
SRI 4 | XWOOBC01



Matte Barnwood
SRI 38 | XWOORC21



Matte Red Cedar
SRI 26 | XWOOBG20



PROJECT SPOTLIGHT:

Matte Barnwood Farmhouse

STANLEY, WI

Nestled in the lush countryside of rural Wisconsin sits this new farmhouse structure featuring Steelscape's Matte Barnwood finish in a board and batten siding profile.

The detailed pattern and shine-free paint produce an authentic wood effect. The versatile Matte Barnwood color pairs well with the black trim while integrating with the rural setting. Unlike traditional aged or distressed wood, this painted metal siding will not rot or decay or require ongoing maintenance. This durable metal siding will continue to look great for many years to come despite the punishment of the extreme Midwest winters.

Siding and Installation: Hixwood Metal

Finish: Steelscape's Matte Barnwood

For more information on Steelscape's Design and Color Solutions, visit steelscape.com



Aged Metallics

Patina Metal Roofing & Siding

Steelscape's Woodgrain prints offer the warmth and natural beauty of wood combined with the durability of metal. Compared to wood, metal is fire resistant, rot resistant, termite resistant, and easier to maintain.

Featuring an authentic blended finish for optimum realism, Steelscape's Woodgrain is ideal for siding applications, including board and batten siding, wall accents, and metal log cabins.



Antique Copper
SRI 35 | XGRAAP01

Natural Antique Copper
SRI 37 | XNATAC40

Rustic Copper
SRI 35 | XGRARC01

Weathered Zinc
SRI 47 | XGRAWZ01



PROJECT SPOTLIGHT:

OCEANSIDE HIGH SCHOOL PERFORMING ARTS CENTER

OCEANSIDE, CA

This 29,000 square foot performing arts hub was designed to set the bar for modern student resources. This expansive facility includes a 500-seat performance theatre, a 100-seat black box theatre, classrooms and more.

Winner of the 2018 42nd Annual Orchids & Onions Architectural Award, the charming patina of Steelscape’s Natural Antique Copper was chosen to provide a distinctive gleaming beacon for the school. This color selection also served to enhance integration with the broader pastel hues of this sun-kissed region.

Architect: Harley Ellis Devereaux

For more information on this color, visit steelscape.com/aged-metallics



Rawhide

Textured Metal Roofing & Siding Colors

Steelscape's Rawhide encompasses a range of textured colors that offer added depth and a less reflective finish. The versatile color palette and appealing texture ensure that Rawhide can be used in a broad range of applications.

This includes commercial siding, standing seam residential roofing, or corrugated wainscoting applications. The glare reducing properties of Rawhide are best deployed on flat surfaces making it ideal for wall applications such as concealed fastened siding products or wide pan standing seam roofing.



Coal Black
SRI 24 | 17513



Dark Walnut
SRI 24 | 17464



Burnished Slate
SRI 28 | 18043



Ash Gray
SRI 31 | 17878



Hartford
SRI 23 | 20532



Steel Gray
SRI 26 | 19914



Apache
SRI 27 | 17882



Slate Gray
SRI 42 | 20531



Hickory
SRI 49 | 20533



PROJECT SPOTLIGHT:

COYOTE HOUSE

RED LODGE, MT

This homeowner selected a classic standing seam roof in Steelscape's Hartford Rawhide color to add performance and beauty to their log home. The crisp lines of the standing seam roof, the classic color, and natural texture of the log siding work together to create a welcoming home. The vivid green color complements the deep green hues of the surrounding area and a tasteful contrast to the natural log siding. The textured finish of the Rawhide color adds additional sensory appeal while reducing glare. This improves the homes integration into its lush, natural setting.

For samples or more information on Steelscape's Rawhide visit [Steelscape.com/rawhide](https://steelscape.com/rawhide)



Textured Rustics

Weathered Metal Roofing & Siding Colors

Steelscape's Textured Rustics include Rustic Rawhide® and Sedona Rawhide™, two finishes that provide an unmatched color experience with an engaging combination of color and texture. These textured finishes feature a multi-toned weathered metal design in conjunction with a wrinkled paint system for optimum authenticity. Both designs interact dynamically with light to recreate the feel of traditional oxidized metal while minimizing surface sheen.



Rustic Rawhide
SRI 32 | XRAWNR01



Sedona Rawhide
SRI 30 | XRAWSR20



PROJECT SPOTLIGHT:

RESIDENTIAL HOME

SNOWMASS, CO

Surrounded by the towering peaks of the Rockies sits this inviting residential home near Aspen Colorado. The home features uninterrupted panoramic views and a steep gabled roof recently replaced with Steelscape’s Rustic Rawhide.

The homeowners needed to replace their existing cedar shake roof with a durable system that would provide a Class A Fire Rating. When used in conjunction with the correct underlayment, Metal provides an excellent, high-performance solution that will last for decades. The homeowners had already decided on a standing seam metal roof but were undecided on color. When shown Rustic Rawhide samples they loved it right away. Rustic Rawhide offers a restrained color that complements the design features of the home with a texture that reduces the sheen of the large roof area.

With both visual appeal and outstanding performance, the home now features a roof as memorable as the views around it.

Roofer: Rich Acerra, Aspen Roofing Contractors
 aspenroof.net

For samples or more information on Steelscape’s Rustic Rawhide
Steelscape.com/rustic-rawhide



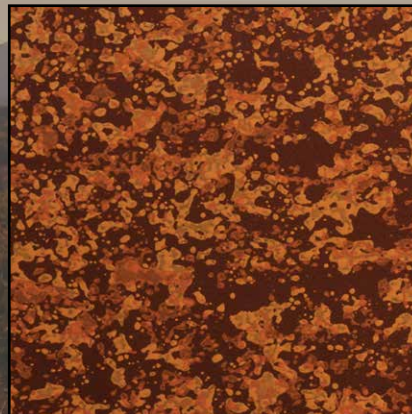
Rustic

Rusted Metal Roofing & Siding Colors

Naturally rusted metals offer charm and a nostalgic feel but come at the cost of performance and durability. Steelscape's Rustics capture the natural beauty of oxidized metal while offering finish warranties of up to 30 years.

From the fresh oxidized glow of Sedona Rust to the aged tone of Natural Rust, Steelscape has an authentic finish for all applications.

The Rustic color palette is suited to a broad range of environments and designed to complement other natural elements such as wood siding and stone. Rustic prints are the ideal color for standing seam roofing, corrugated panels, and flat metal siding.



Burnt Rust

SRI 36 | XGRABI01



Sedona Rust

SRI 31 | XPEBSR01



Natural Rust

SRI 33 | XNATNR01



PROJECT SPOTLIGHT:

FIRE STATION 63

SHORELINE, WA

Having served the local area since 1939, this Washington based fire department required an upgrade to reflect the growing needs of the community. This brand-new firehouse incorporates a range of mixed materials to deliver a stunning, modern design.

Steelscape’s Burnt Rust, featured in a corrugated wall panel was selected to provide warmth and texture to this commanding community building. Burnt Rust offers an oxidized color with an authentic weathered look without the performance compromise. This versatile color both contrasts and complements the gray and neutral tones of other stone and metal siding materials.

Architect: TCA Architecture Planning

Contractor: Shreve Construction LLC

For more information on Steelscape’s Burnt Rust visit [Steelscape.com/rustic](https://steelscape.com/rustic)





PROJECT SPOTLIGHT:
THUNDER VISTA P-8 SCHOOL
 BROOMFIELD, CO

Serving up to 1,000 students, this 142,000 square-foot school provides a robust environment for students to learn and grow. Seeking to integrate with the golden colors of the surrounding mountain region, the design team used a corrugated wall profile in conjunction with Steelscape’s Sedona Rust. This printed rust pattern was used rather than using a true weathered product, which would continue to deteriorate in performance--alleviating the headache of ongoing maintenance by school administrators. Sedona Rust provides the same warm, oxidized glow but is supported by the peace of mind of a complete paint warranty.

Architect: Hord Coplan Macht

Builder: Adolfson & Peterson Construction (AP)

For more information on Steelscape’s Rustic design options, visit steelscape.com/rustic





PROJECT SPOTLIGHT:

FIRESTONE VINEYARD

PASO ROBLES, CA

Designed for a third generation winemaker, this memorable tasting room serves to cement the families winemaking legacy. Exuding a Tuscan charm, this premium venue creates a rich, memorable experience for visitors to the area.

The warm oxidized glow of Steelscape’s Sedona Rust was selected to provide a graceful roofline that contrasts with the light masonry siding yet perfectly suits the golden tones of the Central Coast wine region.

Architect: Vladimir Milosevic

Contractor: Rarig Construction

For more information on this color, visit steelscape.com/rustics





PROJECT SPOTLIGHT:

FIRESTATION 63

TACOMA, WA

The expansive Central Pierce Fire and Rescue Station is designed to house one fire engine and one paramedic unit including crew living and support areas. Finishes were selected and designed based on sustainability, durability and integration into a broader mill concept. Steelscape’s Burnt Rust print in a corrugated profile was selected to add a warm, contrasting hue to other metal wall products while also integrating with wood accents.

Architect: RiceFregusMiller and TCA Architecture Planning

Contractor: SCF General Contractors Inc.

For more information on Steelscape’s Rustic design options, visit steelscape.com/rustic





PROJECT SPOTLIGHT:

SKY RANCH MIDDLE SCHOOL

RENO, NV

Situated in the sparse desert highlands at the base of the Eastern Sierra, sits this charismatic middle school. For this project, metal siding was selected to add depth and unique appeal to this expansive campus. Metal was the preferred material for this facade due to its color versatility, long term durability, and the confidence provided by metal's lengthy finish warranties.

Pairing Steelscape's Sedona Rust and Vintage, these finishes provide rich accent pieces that also integrate effectively with the desert hues of the Reno area and the earth tones of the masonry siding. Much like the desert landscape, these colors provide evolving color as the light changes throughout the day. Applied to standing-seam siding of varying widths, the panel ribs provide varied texture to the facade and capitalize on dynamic shadows to further accentuate the siding color.

Architect: Van Woert Bigotti Architects

Contractor: Core Construction

Photo Credit: Vance Fox

For more information and inspiration on the solid metal colors that Steelscape can create, visit steelscape.com/solid-colors/





PROJECT SPOTLIGHT:

SPRUCE ELEMENTARY

LYNNWOOD, WA

This memorable project features a flexible and lively campus for its diverse community. The 81,000 sq ft school includes classrooms, a gymnasium, student support facilities, and music rooms. A key feature of the design is a central second-floor library, designed to act as a safe and inspiring haven for students.

The building features Steelscape’s Burnt Rust finish, which provides a warm color that connects the building to the surrounding grove of mature trees. This finish, paired with the varied lines of a concealed fastener metal siding, add texture and shadow to the modern, functional design. Burnt Rust was the preferred finish for this project as it provides the fresh rust glow of a traditional oxidized product without any of the long-term maintenance issues, such as rust runoff or staining.

Architect: Bassetti Architects

Installer: King Sheet Metal

For samples or more information on Steelscape’s Burnt Rust visit [Steelscape.com/rustic](https://steelscape.com/rustic)





PROJECT SPOTLIGHT:

PORT OF KALAMA INTERPRETIVE CENTER

KALAMA, WA

Positioned on the banks of the Columbia river, lies this captivating take on a traditional waterfront warehouse. The building provides an operations center for the port and a home for the region’s rich history.

Steelscape worked collaboratively with the Port of Kalama to develop finishes ideal for their waterfront interpretive center. This re-imagined design features Steelscape’s Burnt Rust and Weathered Zinc finishes. These colors recreate the warmth of fresh rust and the timeless metallic glow of aged zinc. The two colors complement other featured materials including stone and exposed metal, to create a harmonious design.

Architect: Collins Architectural Group

For samples or more information on these colors, visit steelscape.com



Solid Colors

Steelscape produces a kaleidoscope of vibrant metal colors ideal for metal roofing, siding, and other metal accessories. Steelscape supplies these metal colors direct to a broad network of leading metal product manufacturers.

Steelscape offers our robust paint system Spectrascape, in addition to a wide variety of other paints and finishes from leading paint vendors. Spectrascape colors offer a broad color palette, excellent durability, and long finish warranties.

Sampling of Spectrascape Metal Roofing and Siding Colors



There are representative colors only. Inquire with your local metal roofing and siding manufacturer, or roofing contractor as to the colors available in your area.



PROJECT SPOTLIGHT:

SKOKOMISH COMMUNITY CENTER

SKOKOMISH, WA

Designed to provide a safe and welcoming environment to the Twana community, this distinctive net-zero structure incorporates a gathering space, commercial kitchen, education space and a gymnasium. The vibrant Colonial Red roof and trim contrasts with the wood siding to provide a captivating, staunch structure that integrates with its surrounding wooded environment. The skillion style roof facilitates the extensive use of solar while also enabling the crisp, clean lines of the standing roof to be on prominent display.

Architect: 7 Directions

Builder: Pease Construction and Rognlins Inc.

For more information on Steelscape's Design and Color Solutions, visit steelscape.com





Project Spotlight:

Mcmenamins Kalama Harbor Lodge

KALAMA, WA

Opened in 2018, the Kalama Harbor Lodge expands the network of family-owned McMenamin brewpubs with this four-story, 30,000 sq. ft. hotel and restaurant. Nestled on the banks of the Columbia River, the lodge is modeled on the famous Pioneer Inn in Maui, a turn of the century, Lahaina building. This inspired design was chosen to complement McMenamins series of eclectic, captivating locations while also paying homage to one of the regions first settlers, John Kalama, originally from Maui.

Despite its historic appearance, this expansive hotel was built new from the ground up. The classic lines of the standing seam roof paired with a charismatic red hue, serve to provide a tasteful contrasting color to the lush surrounding environment while supporting the continuity of this historically influenced design.

Architect: Collins Architecture Group

For more information on this color, visit steelscape.com



PROJECT SPOTLIGHT:

410 URBAN INFILL

CALGARY, AB

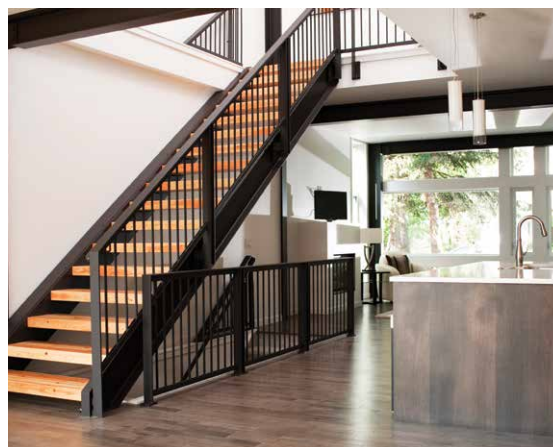
This 2,000 square foot modern residential home is designed to optimize living space for a family of four within the modest confines of inner suburban Calgary. Deploying a structural beam and post framed design, this home creates the feeling of space through an open-plan layout and high vaulted ceilings. Large windows on both floors accentuate the open, spacious feeling.

The extensive use of standing seam metal cladding in Steelscape’s Slate Gray adds texture and distinct shadow lines while contributing to the modern aesthetic. This versatile color enables the unique integration between roof and siding surfaces. The muted hue also complements and accentuates the use of natural stained wood leading to a cohesive, memorable design.

Architect: Ryan Schmidt Architecture

Builder: Ironwood Building Corporation

For more inspiration visit steelscape.com/solid-colors/





PROJECT SPOTLIGHT:

ELK GROVE ANIMAL SHELTER

ELK GROVE, CA

Opened in October 2019, 7 years after it was originally envisioned, this shelter is designed to provide a warm atmosphere for 65 dogs, 55 cats, and other small animals. As the facility is heavily trafficked and requires frequent cleaning, metal was an obvious choice to reduce Operations & Maintenance budget impacts.

Genuine Steelscape steel was chosen for metal siding, roofing, and soffits to add visual interest, durability and for cost-effectiveness from both an environmental and capital cost perspective. To help convey the warm, fun, and inviting atmosphere, a bright custom yellow “Tuscan Sun” was chosen by a public forum. This was used in conjunction with contrasting Zinc Gray siding and roofing. This bright, modern color scheme blends well with the mixed-use of wood and brick to create a dramatic, contemporary design.

Architect: Eric Whole and Carolyn Natividad, LDA Partners

General Contractor: Robert E Boyer, Inc.

For more inspiration visit steelscape.com/solid-colors/





PROJECT SPOTLIGHT:

‘BLACK MAGIC’

PRIVATE RESIDENCE

ASPEN, CO

Nestled in the picturesque mountainside close to Aspen, Colorado, sits this stunning, modern single-family home. Appropriately called ‘Black Magic’, the home features an open floorplan and large windows of varying sizes to maximize the breathtaking views of this unique location.

Seeking to make a bold statement from its heavily wooded lot and earthy surroundings, the home features the extensive use of metal cladding in a dark solid hue. Corrugated metal wall panels add texture and visual appeal to the large squared surfaces, while also providing strength and resistance against the harsh Colorado winters. The use of similarly colored flush panels for accent pieces, add additional visual distinction to the structure.

Contractor: Rowland+Broughton Design Build

For more information and inspiration on the solid metal colors that Steelscape can create, visit steelscape.com/solid-colors/

ZINCALUME®

A Revolutionary Metallic Coated Steel

Manufactured by Steelscape, ZINCALUME offers unmatched durability and corrosion performance. Known by the trade name Galvalume®, this coating consists of an optimized 55% Aluminum-Zinc metallic coating over steel which offers up to a 60 year service life in exterior applications.

Steelscape offers ZINCALUME bare, or in an endless array of colors, finishes and textures, providing ultimate design freedom.





PROJECT SPOTLIGHT:

LANDMARK SQUARE

CLOVIS, CA

Near the center of Old Town Clovis, sits this six-acre lot turned 35,000 sq ft Senior Activity Center, Transit Center, and Public Library. The Landmark Square project brings together the County of Fresno with the City of Clovis, with sustainability, inclusion, and longevity in mind. The Senior Activity Center was completed in Summer 2022 as the first of many project phases. A key element in achieving this project design was the use of long-lasting and energy-efficient metal roofing.

One main advantage of metal roofing is its long lifespan. Longevity was an important factor for this project as it was designed to be a long-term investment in the community. The roofing system chosen was a standing seam metal roof system from AEP Span. The mechanically seamed panel provided clean, bold line aesthetics to the roof as well as a weather-tight design.

To ensure long-lasting protection and aid in the sustainability design element, a 22ga thickness in ZINCALUME® Plus coated metal was selected for the finish. The aluminum-zinc coating of ZINCALUME offers two to four times the corrosion resistance of regular galvanized products while also being energy-efficient. ZINCALUME is Red List Free and offers a high three-year aged Solar Reflectance Index, meaning it reflects heat from the sun efficiently, reducing structure cooling costs.

Landmark Square project is a great example of the benefits of using metal roofing for commercial projects. Metal roofing provides both functional and aesthetic benefits while also offering cost savings over the long term. Contrasting other roofing materials that require periodic replacement, the community of Clovis will be able to enjoy these new structures for several decades with minimal maintenance.

Architect: Paul Halajjan Architects

Roofing Product: AEP Span 22ga SpanSeam

Installer: Pac Shield Roofing

Finish: ZINCALUME® Plus

For more information on Steelscape's Design and Color Solutions, visit steelscape.com

Natural Matte[®]

Ultra Low Gloss Metal Roofing & Siding Colors

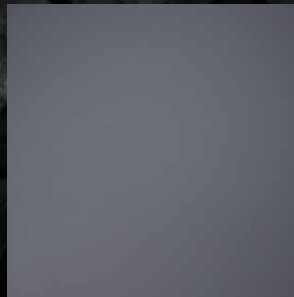
Steelscape offers our robust PVDF paint system, in addition to a wide variety of other paints and finishes from leading paint vendors. These colors offer a broad color palette, excellent durability, and long finish warranties.

Subtle. Refined. Revolutionary.

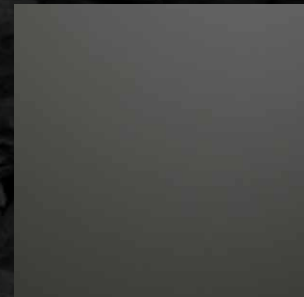
Natural Matte[®] PVDF is the ultimate low-gloss metal finish to elevate building exteriors.



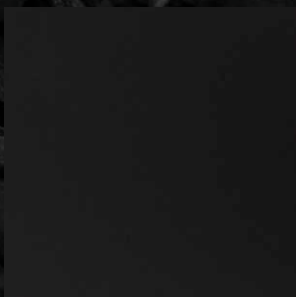
Shale
SRI 41 | 24136



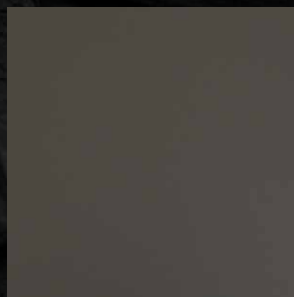
Basalt
SRI 31 | 23157



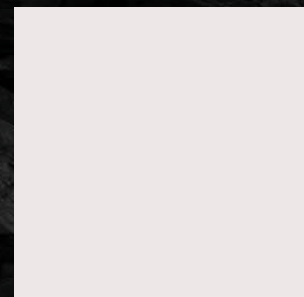
Graphite
SRI 28 | 24149



Carbon
SRI N/A | 24106



Ore
SRI 27 | 24074

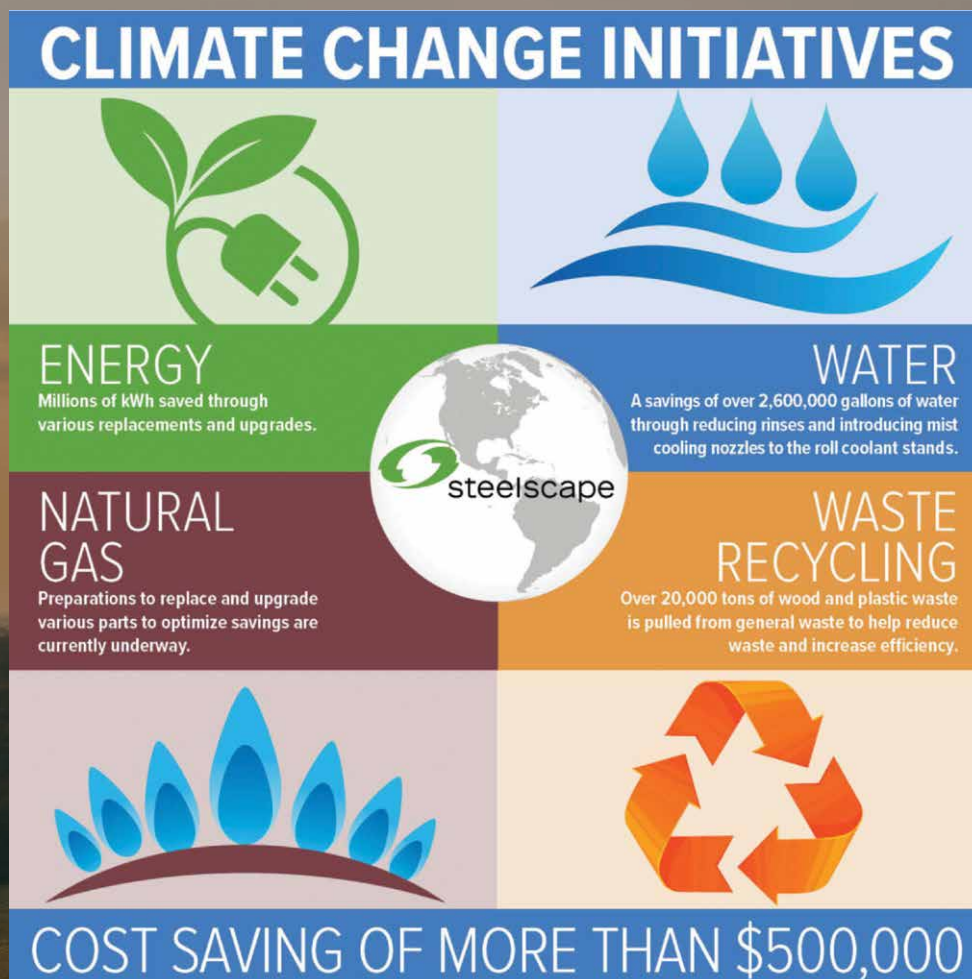


Frost
SRI 86 | 24075

Climate Change Initiatives

We work hard to find ways to increase awareness and decrease waste.

Recycling and reduction efforts translated to a cost savings of more than \$500,000; not to mention the environmental impact. This included reusing and recycling pallets, preventing food waste at site canteens going to landfill, and reducing hazardous waste.





For more product information or samples:

888-553-5521

steelscape.com

productinfo@steelscape.com

