

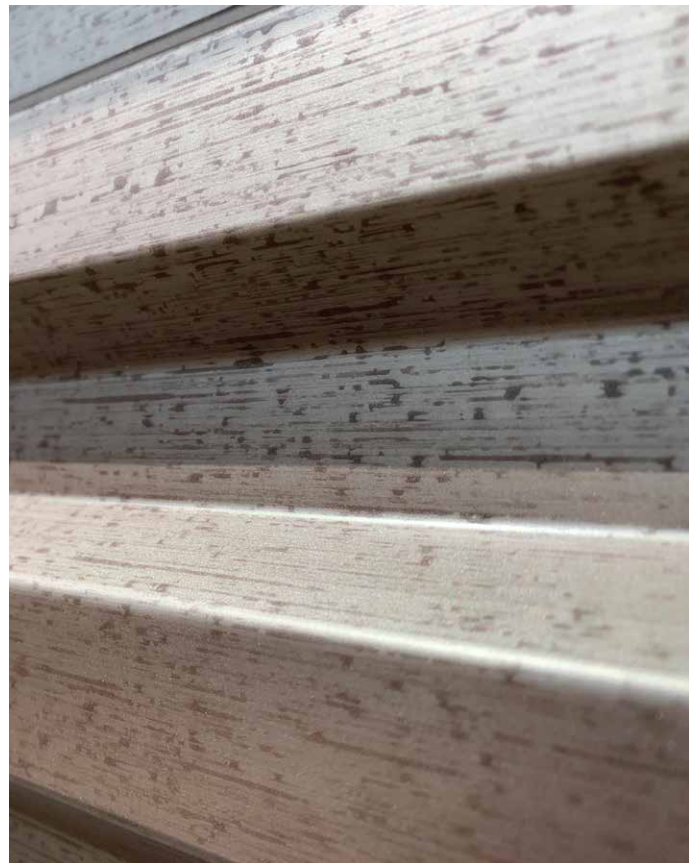


TIMELESS CHARM. UNPARALLELED DEPTH.

## Vintage® Heritage

Steelscape's Vintage continues to be used extensively in building design for its engaging luster, and classic metallic look. Vintage Heritage expands upon this timeless aesthetic by adding additional depth and enhanced character in natural light conditions.

Designed to enhance immediate surface engagement while providing the same distinctive Vintage look from afar, Vintage Heritage is perfect for your next project. Available in two engaging, yet subtly different finishes, Vintage Heritage is designed to complement any metal roof and wall profile.



**Evolution**  
VSPGEV45



**Legacy**  
VSPGLG45

Representation of color may vary due to printing limitations. Actual metal samples are available upon request.

Due to the unique nature of this product, color may vary slightly from batch to batch. Batches should not be mixed on projects.

# PERFORMANCE QUALITIES



**Substrate:**  
(ASTM A653)

G90 TruZinc® (HDG) Coated Steel

**Thickness:**

.0236 (24ga) or .0296 (22ga)

**Steel Grade:**

50

**Finish:**

Durable finish with a proprietary distinctive metallic luster using fluorocarbon pre-paint technology

**Surface Appearance:**

Smooth and free of blistering and other surface imperfections

**Film Thickness:**  
(ASTM D5796)

Top System:

Printcoat = 0.10 – 0.30 mil

Top Finish = 0.55 – 0.65 mil

Bottom System:

Primer = 0.15 – 0.25 mil

Backer = 0.30 – 0.40 mil

**Specular Gloss:**  
(ASTM D523)

60 Degree Specular Gloss =  
20% - 40%

**Hardness:**  
(ASTM D3363)

2H – 4H

**Cure Test:**  
(ASTM D5402)

100 Double MEK Rubs Minimum

**Cross Hatch Adhesion:**  
(ASTM D3359)

No Tape Off

**Reverse Impact:**  
(ASTM D2794)

No Tape Off, 80 inch-pounds of force

**T-Bend Flexibility:**  
(ASTM D4145)

2T No Tape Off

**Humidity Resistance:**  
(ASTM D2247)

1,000 Hours – Passes  
(100% RH @ 100 degrees F)

**Salt Spray Resistance:**  
(ASTM B117)

1,000 Hours – Passes  
(5% Salt Spray @ 95 degrees F)

**Production Location:**

Kalama, WA